





Coffey Studio  
Kansas City,  
Mo.



Coffey Studio  
Kansas City,  
Mo.

Dora Jones  
Rula Hanson  
Zelma McNight  
Betty Jensen





Will Asper     Dean Anderson     Wilcken Fox

Wilford Young

(Graduated L.D.S. Jr. College  
June 3 1927)

Selma Graff

Blumenwälder N. M.







BILLY



Wilford



PAUL BILLY WILFORD

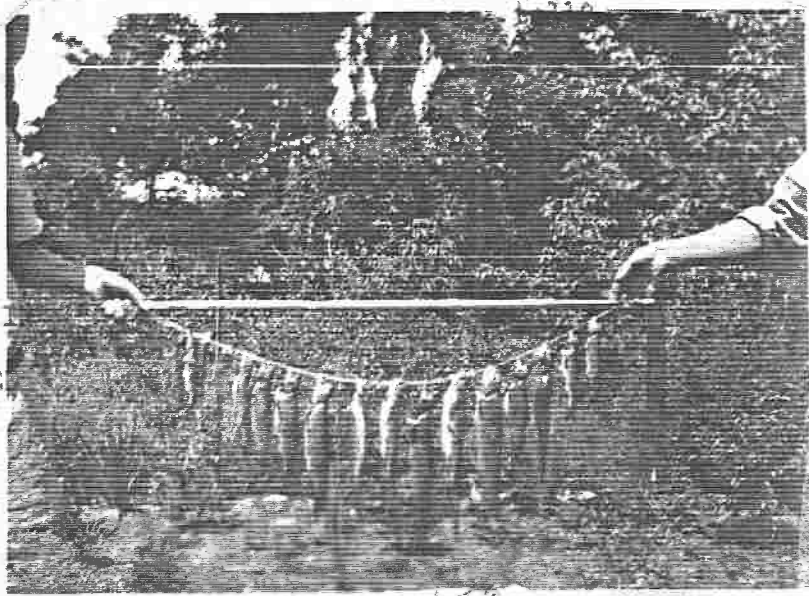


WILFORD BILL PAUL

Left rear - cant -  
tail? WILFORD



LEFT:  
WILLARD  
JENSEN  
A FRIEND  
IN S.L.C.  
HE WANTED  
TO BE IN  
THE  
PICTURE



WILFORD: BACK IN  
SALT LAKE CITY

WILFORD'S ARM  
OUR SECOND TRIP TO MACKAY, IDAHO

1962

HAZELS ARM



Bear Lake Near Laketown Sept. 1918.



Looking to the East from Rear of 29 'I' St.







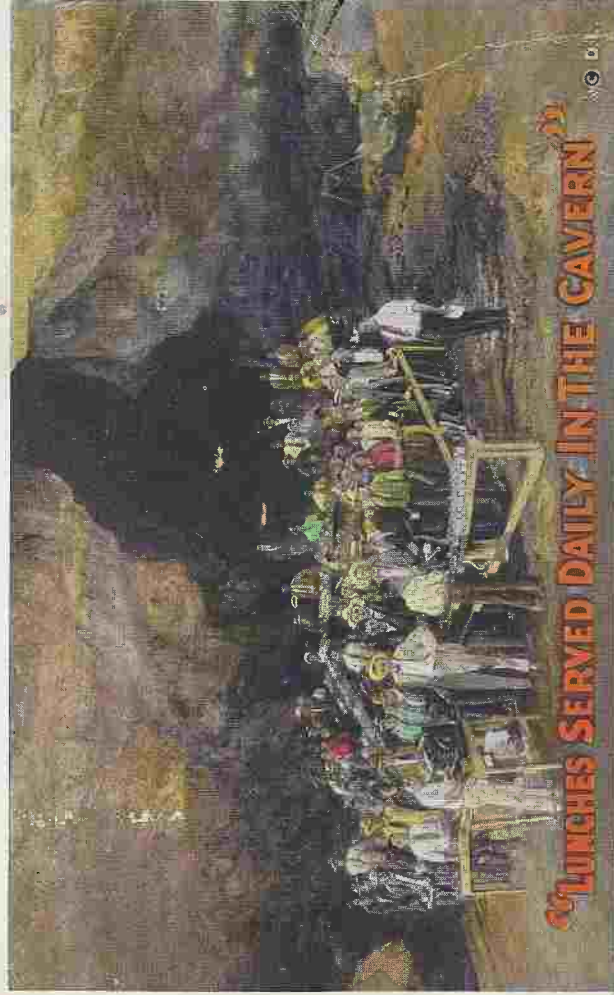




*Vitalis*

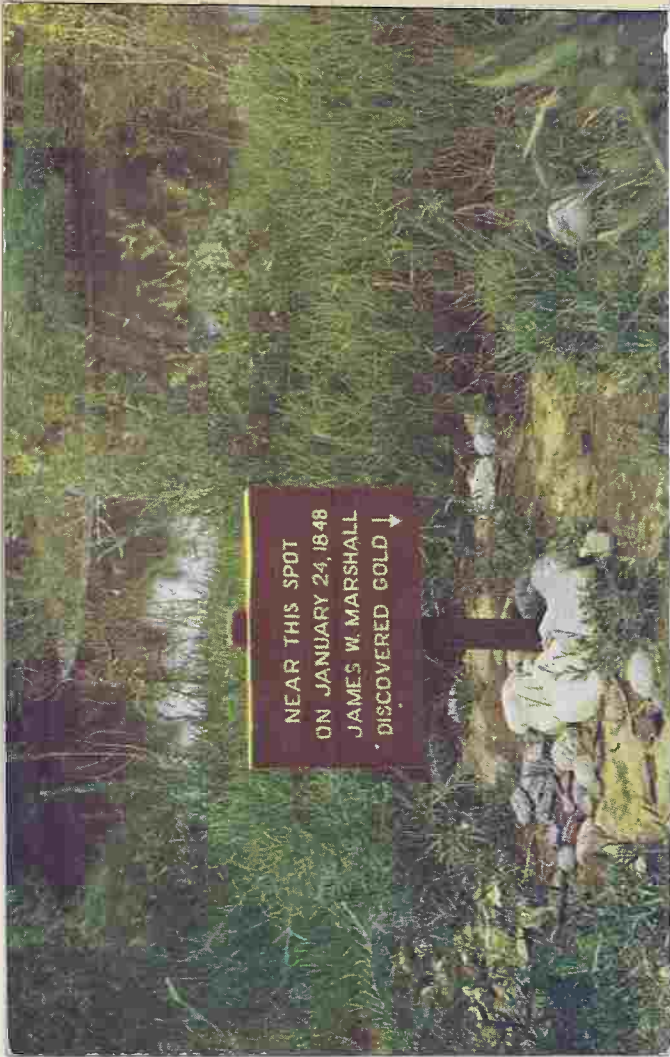


*Air University Library, Maxwell Air Force Base*

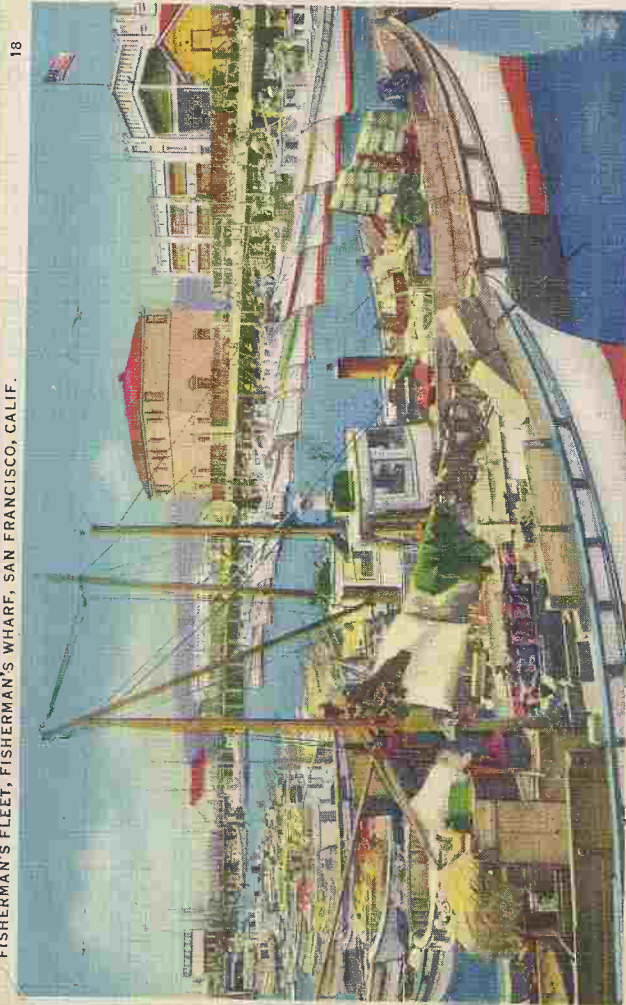


**LUNCHES SERVED DAILY IN THE CAVERN**

12.15.30



FISHERMAN'S FLEET, FISHERMAN'S WHARF, SAN FRANCISCO, CALIF.



18

2A-H772

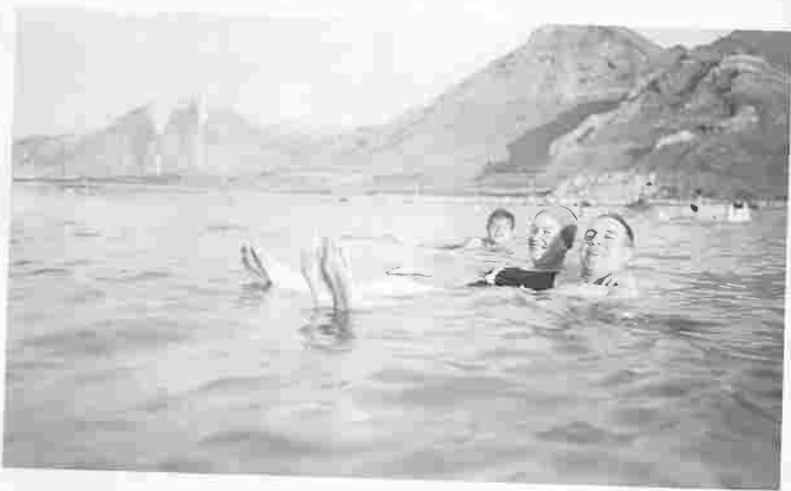
Carp just  
Caught By  
Bill asper  
about 9th East  
4 3rd St  
Salt Lake City  
about  
1926

W. D. and Young  
D. B. from from  
M. B. from from  
A. B. from from









Sonny and  
Aleanne at  
Theodore's Wedding  
The little girl next  
to Sonny by the candle  
is Floretta's sister  
Lois.





Acta Asper Young

Willard T Young

1935





Joe Johnson

Uncle Davis

Walter Young

1936

Joe Johnson

Ensign steps missionaries  
1939

MADE BY  
**D. F. DAVIS**  
Commercial Photographer  
SALT LAKE CITY

Winslow Fair Smith

Oscar Neff

Pres Winslow For Smith



Wm. H. Johnson

W.S.

W.T. Young

(SALT LAKE) EMIGRATION STAKE MISSION, 1936 - 1939

(SALT LAKE) EMIGRATION STAKE MISSION 1936-1939





WORLD  
FAMOUS  
TREE  
HOUSE  
BELIEVE IT  
OR NOT

ADMISSION  
♦ FREE ♦

LIVE  
BURLS







*Wilford T. Young 1937*

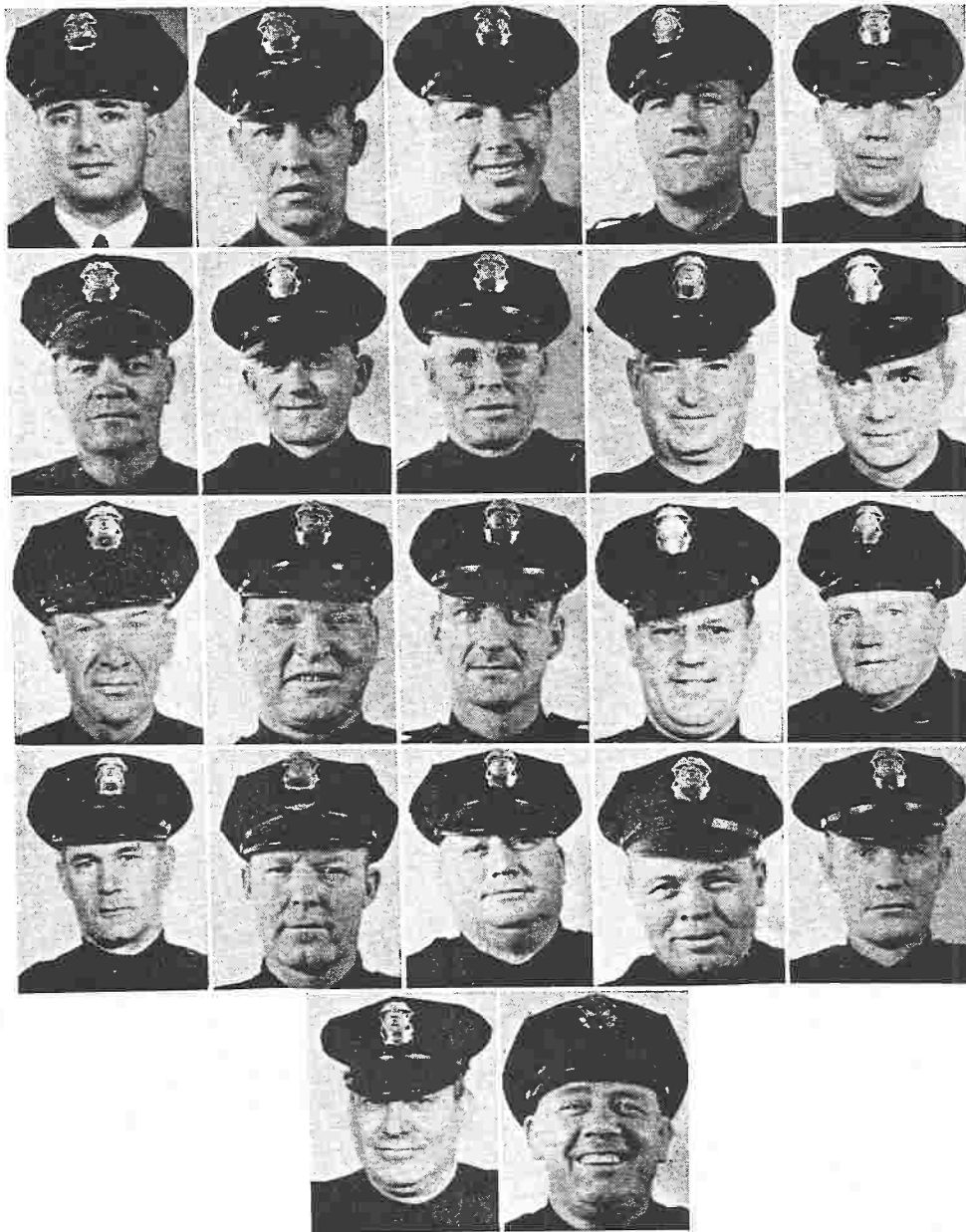
1937

WILFORD T. YOUNG  
SALT LAKE CITY POLICE

1939

38





C. C. Rich

H. A. Peterson

E. Peterson

D. C. Wood

E. J. Barnes

R. H. Haight

A. J. Orencole

E. D. Williams

F. O'Brien

W. L. Marrom

R. H. Brewerton

W. Cloward

W. T. Young

P. W. Folsom

D. G. Johnson

F. M. Kingston

T. J. Richardson

G. J. Buckway

P. W. Johnson

Lee Rogers

H. L. Burton

C. T. Smith

W. L. Ford Young

1938















John Baysinger, Wilford Young,  
Arthur Phippen 70's Presc'y









Just to say in the same old way  
MERRY CHRISTMAS  
AND A HAPPY NEW YEAR

*The Jensens*

Jensen  
1627 Alverno Ave  
Dayton, Ohio



Mrs & Mrs. W. T. Young  
29 - E - Street  
Salt Lake City  
Utah

1947





Laura, Bill, Ada, Gene, 1943



1943

W. F. Young

That Shadow on  
My Face is  
From my Big  
Nose







**WILFORD T. YOUNG**  
Wears policeman's hat







## Emergence From Hiding Places Under Eyes of Police Investigators

City and county peace officers arrest suspect couple in \$500 service station holdup after being held outside a residence at 707-5th ave. for an hour Monday afternoon.

At left, Sgt. W. T. Young and Tom Callicott, chief sheriff's deputy, question Eloise A. McGowan, who hid in clothes closet. At right, George W. Beebe, exconvict,

emerges from behind piano where he covered until discovered by Det. Sgt. J. R. Hunsaker, shown with back to camera. (Photos by B. P. Gray, staff photographer.)

## Tip Spurs Police Capture Of 2 Holdup Suspects



An anonymous tip to a Sal Lake police sergeant Monday afternoon led to the arrest of a man and woman charged with the armed robbery early last Thursday of Osterloh & Son Truck service station, 2180 S. State.

Police and sheriff's officers went to 707-5th ave., where they found George W. Beebe, 31, cowering behind an upright piano. A woman booked as Eloise A. McGowan was hiding in a clothes closet in a rear bedroom.

#### Anonymous Tipster

The anonymous tipster told Sgt. W. T. Young that Beebe was the man wanted and he passed the word to Det. Sgts. J. P. Hunsaker and H. W. Clark. Beebe has a police record including a sentence in Utah for prison for carnal knowledge.

The detectives took a picture of Beebe from their files to Mr. and Mrs. Fred Anderson, 834 Pierpont ave., attendants at the service station when it was robbed.

With tentative identification established by the Andersons, the detectives went to the 5th ave. address where they demanded admittance. No one came to the door. For more than an hour efforts of the two men, aided by Lt. M. D. McGinness, failed to gain admittance to the house, although three times persons were seen moving inside the building and curtains at the front windows were observed to be brushed aside.

After failing to get an answer on the telephone at the address, Lt. McGinness radioed headquarters to alert Sheriff George Beckstead. The sheriff obtained a warrant for Beebe and "Jane Doe." Armed with this paper, the detectives, Sheriff Beckstead and three deputies from his office prepared to force entry into the house.

The front door was opened to Det. Hunsaker by Mrs. Hazel B. Hendricks, mother of Beebe, just seconds before deputies broke in a back door.

#### Search House

After a few seconds of questioning Mrs. Hendricks, a search of the house started. Det. Hunsaker discovered Beebe behind the piano, set at an angle across a corner of the front room. About five minutes later Sheriff Beck-

# S. L. Firm Gets Contract on New Refinery To Broaden Highway Board 'Ribbon of Death' Sets Right of Way Purchase After Christmas Holidays

The state road commission will start "right after the Christmas holidays" to purchase right of way for improvement of U. S. highway 81 between Roundup and north Farmington, Ray H. Leavitt, commission chairman, announced Monday. This section is Utah's so-called "ribbon of death" highway.

Reporting that engineering plans for the project are well advanced, Leavitt said the commission expects the program at the construction stage early next spring.

"We have the necessary right of way in place," he said, "and we can obtain federal public roads administration approval before seeking contracts. Mr. Leavitt pointed out that the commission chairman, de- veloped the project, its staff, "we haven't confined in anyone for fear of speculation."

By George W. Bennett, Salt Lake City. The state road commission is planning director, county had contributed to the dangers of the nine-mile stretch, is doing what Mr. Bennett said, "we haven't confined in anyone for fear of speculation."

## Group Spikes Merger of Health Units

The proposed merger of Salt Lake City and county health units received a setback Monday when a four-man study committee recommended that no such unit be created under present conditions. Committees, members exhibited some opposition Monday morning at a joint meeting of city and county commissioners. They said the merger would increase the county's health budget with increased taxes to pay for it.

Mayor Earl J. Glade said he favored the merger in principle, but it would not be feasible without new legislation to handle the merger. He said he would like to see a more definite plan for the merger.

## Hotel Ordered To Rehire Union Worker

The state labor relations board ordered the Hotel Grand Central to rehire a union worker who had been discharged after a strike. The board said the hotel management had acted improperly in firing the worker.

The worker, who had been employed for several years, was discharged after a strike. The board said the hotel management had acted improperly in firing the worker.

## Tip Spurs Police Capture Of 2 Holdup Suspects

An anonymous tip to a Salt Lake police sergeant Monday afternoon led to the arrest of a man and woman charged with the armed robbery early last Thursday of Ochoco & Son Trucking Co. The tip came from a man who had seen the suspects in a car.

Police and sheriff's officers went to 707-5th ave. where they found George W. Beebe, 31, cowering behind an upright piano. A woman was hiding in a closet. The woman was identified as Helen E. Gray, 28, of 1000-10th ave.

## Inquest Slated In Death of City Employee

An inquest into the death of John Holm, a city employee who died Sunday night, has been scheduled for Monday morning at the Salt Lake City coroner's office.

John Holm, 40, was a city employee for many years. He died of a heart attack while on duty. The coroner's office is conducting an inquest into the death.

## Last-Minute Yule Shopping Shows Some Gifts Scarce

With Christmas shopping in its last stages, merchants reported shortages Monday of certain popular gifts. Some gifts were scarce, while others were plentiful.

Merchants said that some gifts, such as toys and electronics, were in short supply. However, other gifts, such as clothing and food, were still available.

## Streets Echo With Carols

Salt Lake City's business district was filled with the sound of carols Monday night as late shoppers filled the streets. The city was decorated with lights and garlands.

The streets were filled with people shopping for Christmas. Many shops were open late into the night. The city was decorated with lights and garlands.

## Report \$250 Kit Stolen

A report was filed Monday that a \$250 kit had been stolen from a store. The kit contained various items, including tools and materials. The store owner is looking for the thief.

The kit was stolen from a store in the downtown area. The store owner is looking for the thief. The kit contained various items, including tools and materials.



At left, Mr. and Mrs. W. T. Young and their children, standing with a group of friends. The group is posing for a photograph in a formal setting.

## Winners of Christmas Contest

The winners of the Christmas contest were announced Monday. The contest was held to raise money for a charity. The winners received prizes and certificates.

The contest was held by the Salt Lake City Chamber of Commerce. The winners were announced at a ceremony. The winners received prizes and certificates.

## Group Spikes Merger of Health Units

The proposed merger of Salt Lake City and county health units received a setback Monday when a four-man study committee recommended that no such unit be created under present conditions. Committees, members exhibited some opposition Monday morning at a joint meeting of city and county commissioners. They said the merger would increase the county's health budget with increased taxes to pay for it.

Mayor Earl J. Glade said he favored the merger in principle, but it would not be feasible without new legislation to handle the merger. He said he would like to see a more definite plan for the merger.

## Hotel Ordered To Rehire Union Worker

The state labor relations board ordered the Hotel Grand Central to rehire a union worker who had been discharged after a strike. The board said the hotel management had acted improperly in firing the worker.

The worker, who had been employed for several years, was discharged after a strike. The board said the hotel management had acted improperly in firing the worker.

## Tip Spurs Police Capture Of 2 Holdup Suspects

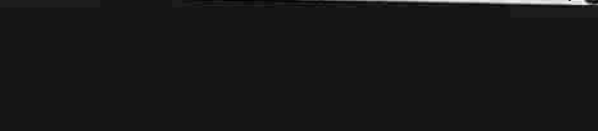
An anonymous tip to a Salt Lake police sergeant Monday afternoon led to the arrest of a man and woman charged with the armed robbery early last Thursday of Ochoco & Son Trucking Co. The tip came from a man who had seen the suspects in a car.

Police and sheriff's officers went to 707-5th ave. where they found George W. Beebe, 31, cowering behind an upright piano. A woman was hiding in a closet. The woman was identified as Helen E. Gray, 28, of 1000-10th ave.

## Inquest Slated In Death of City Employee

An inquest into the death of John Holm, a city employee who died Sunday night, has been scheduled for Monday morning at the Salt Lake City coroner's office.

John Holm, 40, was a city employee for many years. He died of a heart attack while on duty. The coroner's office is conducting an inquest into the death.



A small photograph of a person, possibly a child, sitting in a chair. The person is looking towards the camera.

## Winners of Christmas Contest

The winners of the Christmas contest were announced Monday. The contest was held to raise money for a charity. The winners received prizes and certificates.

The contest was held by the Salt Lake City Chamber of Commerce. The winners were announced at a ceremony. The winners received prizes and certificates.

## Group Spikes Merger of Health Units

The proposed merger of Salt Lake City and county health units received a setback Monday when a four-man study committee recommended that no such unit be created under present conditions. Committees, members exhibited some opposition Monday morning at a joint meeting of city and county commissioners. They said the merger would increase the county's health budget with increased taxes to pay for it.

Mayor Earl J. Glade said he favored the merger in principle, but it would not be feasible without new legislation to handle the merger. He said he would like to see a more definite plan for the merger.

## Hotel Ordered To Rehire Union Worker

The state labor relations board ordered the Hotel Grand Central to rehire a union worker who had been discharged after a strike. The board said the hotel management had acted improperly in firing the worker.

The worker, who had been employed for several years, was discharged after a strike. The board said the hotel management had acted improperly in firing the worker.

## Tip Spurs Police Capture Of 2 Holdup Suspects

An anonymous tip to a Salt Lake police sergeant Monday afternoon led to the arrest of a man and woman charged with the armed robbery early last Thursday of Ochoco & Son Trucking Co. The tip came from a man who had seen the suspects in a car.

Police and sheriff's officers went to 707-5th ave. where they found George W. Beebe, 31, cowering behind an upright piano. A woman was hiding in a closet. The woman was identified as Helen E. Gray, 28, of 1000-10th ave.

## Inquest Slated In Death of City Employee

An inquest into the death of John Holm, a city employee who died Sunday night, has been scheduled for Monday morning at the Salt Lake City coroner's office.

John Holm, 40, was a city employee for many years. He died of a heart attack while on duty. The coroner's office is conducting an inquest into the death.





## Emerge From Hiding Places Under Eyes of Police Investigators

City and county peace officers arrest suspect couple in \$500 service station holdup after being held outside a residence at 707-5th ave. for an hour Monday afternoon.

At left, Sgt. W. T. Young and Tom Callicott, chief sher-iff's deputy, question Eloise A. McGowan, who hid in clothes closet. At right, George W. Beebe, exconvict,

emerges from behind piano where he cowered until discovered by Det. Sgt. J. R. Hunsaker, shown with back to camera. (Photos by B. F. Gray, staff photographer.)

## Group Spikes Merger of Health Units

The proposed merger of Salt Lake City and county health units received a setback Monday when four-man study committee recommended that no such unit be created under present statutes. Committee members submitted commendations Monday morning at a joint meeting of city and county commissioners. They said unit would be an added bureau with increased cost to taxpayers.

### Glade Says 'Unfeasible'

Mayor Earl J. Glade said he feared the merger in principle. It would not be feasible without new legislation to localize responsibility and set up the unit on a more definite basis. There is nothing definite the city would benefit from federal aid. It depends entirely on the action of some bureau, he added.

## WINTER BOWS IN OFFICIALLY, SANS SNOW-TEMPORARILY

"You can't believe everything you see," the weatherman reminded city residents with a special message to those who thought winter had come—and weren't quite right until Monday.

Snow or no snow, ice or no ice, winter did not arrive in Salt Lake City until Monday at 9:23 a.m., said the seasonal authority.

And for those who like their 24 hours balanced toward the brighter side, the weatherman had a cheery word. Spouting official language again, he pointed out Monday was the shortest day of the year, with the sun above the horizon little more than nine of the 24 hours.

For its "shortest day" record the sun rose at 7:49 a.m., set at 5:03. The sun, at its greatest distance from the equator, now starts back toward its "longest day" position, explained the weatherman.

The light snowfall Salt Lakers found on the ground Monday morning was the result of a storm front which entered the area from the Pacific coast, according to the Salt Lake weather bureau. But the storm brought with it only traces of precipitation and "a high pressure area moving in behind the storm now dominates the intermountain region," according to the bureau.

## Last-Minute Yule Shopping Shows Some Gifts

## Tip Spurs Police Capture Of 2 Holdup Suspects

An anonymous tip to a Salt Lake police sergeant Monday afternoon led to the arrest of a man and woman charged with the armed robbery early last Thursday of Osterloh & Son Trucking service station, 2180 S. State.

Police and sheriff's officers went to 707-5th ave., where they found George W. Beebe, 31, cowering behind an upright piano. A woman booked as Eloise A. McGowan was hiding in a clothes closet in a rear bedroom.

## Inquest Slated In Death of City Employee

An inquest into death of Glen John Holtzman, 31, 450 Goshen ave., city employee who died Sunday morning from a fractured skull apparently received in a fight Saturday night has been scheduled for Tuesday at 2 p.m. before City Judge Reva Beck Bosone.

The inquest order was signed at the request of Salt Lake County Atty. Edward L. Morrissey. Marvin J. Bertoch, deputy coun-

sel, was present. The detectives took a picture of Beebe from their files to Mr. and Mrs. Fred Anderson, 834 Pierpont ave., attendants at the service station when it was robbed.

With tentative identification established by the Andersons, the detectives went to the 5th ave. address where they demanded ad-

## S. L. Firm Gets Contract on New Refinery

To Erect 2 Largest Units of New Standard Oil Plant

A subcontract for fabrication of the two largest vessels Standard Oil Co. of California will erect near the city as part of its \$5,000,000 refinery, has been awarded to Lang Co., Inc., Salt Lake City, it was announced Monday.

Officials of the Bechtel Corp., San Francisco, which has the project contract, declined to list amount of the contract.

In Salt Lake City, Walter W. Kershaw, vice president of the Lang Co., said the firm expected to do "a substantial part of the steel fabricating." He had no additional comment.

### Uses Geneva Steel

The firm gets all its plate and much of its structural steel from the Geneva steel plant. Sheet steel must be obtained through Chicago or Pittsburgh, as it is not manufactured at Geneva.

The Lang Co. was understood to be bidding for a number of subcontracts. The firm expects to do a sizable portion of the plate and sheet work, but little or no structural fabrication.

Site of the project has not been announced. A Bechtel official told the Associated Press in San Francisco the plant would cover two or three acres on a site of nearly 50 acres "northwest of Temple square."

### Plan January Start

Officials of other oil companies declined to estimate what fabrication of the two vessels would cost. They said it might vary greatly depending upon specifications.

Work on the project is expected to start in January and be completed in about eight months.

V. G. Hindmarsh, Bechtel's vice president in charge of refinery construction, will direct the work.

Standard Oil of California will use the new refinery to process crude oil into a limited number of products, such as gasoline, heating oil and fuel oil. The unit will tie in with a pipe line from Rangely, Colo., which will be built next year.

An official of the Bechtel Corp. said comparatively few contracts would be let. The organization is equipped to do much of the work itself.

### ANNUAL SING

## Streets Echo With Carols

Salt Lake City's business district reverberated with the sound of more than a thousand voices Monday night as late shoppers

## Highway Boas To Broaden 'Ribbon of Death'

### Sets Right of Way Pure After Christmas Holidays

The state road commission will start "right after tmas holidays" to purchase right of way for improvement of U. S. highway 91 between Bountiful and north Farmington. H. Leavitt, commission chairman, announced Monday.

tion is Utah's so-called nine-mile "ribbon of death."

Reporting that engineers for the realignment and project are nearly complete, Leavitt said the commission expects the program at the time stage early next spring. After the necessary way is acquired, the commission will obtain federal public road construction approval before contracts, Mr. Leavitt pointed out.

The commission chairman declined to reveal rerouting involved in the project. "We haven't confided it for fear of speculation."

Asked for comment on Weber county planning that lack of planning had contributed dangers of the nine-mile ribbon, Mr. Leavitt asserted the state is doing what Mr. Smith should be doing.

Mr. Smith termed it Davis county community county itself to zone the area in a confusion of us make safe traffic on U. S. ally impossible.



Edward A. West . . . Originated modern trolley coach.



Alfred E. Periman . . . Continues upward climb in industry.

## D&RG Boosts

## Hinckley S Airfields A Whole Reg

Tribune Bureau Wire

OGDEN, Dec. 22 — The good airports in a vicinity better it is for all communities. Robert H. Hinckley, mer assistant secretary, moved for air, said Monday in Ogden.

"The current campaign to prove the Salt Lake City definitely is advantageous, as well as to Salt Lake. The two cities in such proximity are in a position to alternate landing fields; other," he said.

Mr. Hinckley, a native of is visiting here for the first time. He is vice president of the National Broadcasting Co., New City.

"In cases where the Salt airport is closed, it is advised that traffic be diverted to the Ogden airport."









Cliff and Carsten





# Bryant School Dads Find P-TA Can Be a Lot of Fun



1 J. R. Thalman, left; Principal M. F. Noall of Bryant school and Wilford T. Young talk things over. Mr. Noall once taught them, now teaches their children.

Problems of school and home, frank discussions of children's progress and a "plain good time" are highlighted at any meeting of parents and teachers.

Typical of a parent-teacher association program was the "Dads' night" session held Monday at Bryant junior high school, when fathers took the limelight.

Tumbling acts by the boys' gymnasium class, a rousing amateur fight card and an address by Mrs. Jennie Thomas, faculty member, on her experiences in England as an exchange teacher last year were entertainment features.

Following the meeting, the parents roamed the halls of the school, visited classrooms where their children study and "talked things over" with teachers.

The Telegram went along and took the pictures you see on this page.



2 Mrs. Hugh F. Hyde, who has daughter in school, is directed to her home room by ushers Bob Myers, center, and Ra Norberg, who were guides about building.







UNIVERSITY OF UTAH 1950 CLASS IN ALCOHOL STUDIES. (ALCOHOLICS)

LEFT TO RIGHT I AM #2 2ND ROW

I WAS LIEUTENANT AT THIS TIME.---SINGLE CAR.



SALT LAKE CITY TEMPLE WORKERS SOCIAL.  
1950. HELD AT THE "MOUTH" OF BIG COTTONWOOD CANYON.  
I AM THE SECOND TO THE RIGHT IN THE REAR ROW. ADA IS RIGHT IN FRONT OF ME IN  
THE NEXT ROW.  
I SERVED AS AN ORDINANCE WORKER FOR ~~ONE~~ TEN YEARS. I WAS RELEASED WHEN  
ADA BECAME SO VERY ILL.

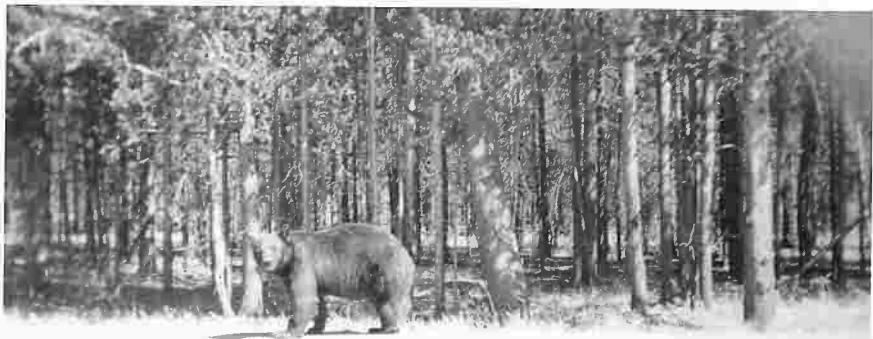
WING THE HEIGHT OF THE NEW F.M. RADIO ANTENNAS. AT RADIO TERMINAL. 96H SOUTH AND 7TH EAST



HAROLD M. GOATES RADIO TECHNICIAN  
HAROLD M. GOATES'S RADIO TROOP

WILL T. YOUNG CAPTAIN COMMUNICATIONS  
THOMAS W. SAATHOFF





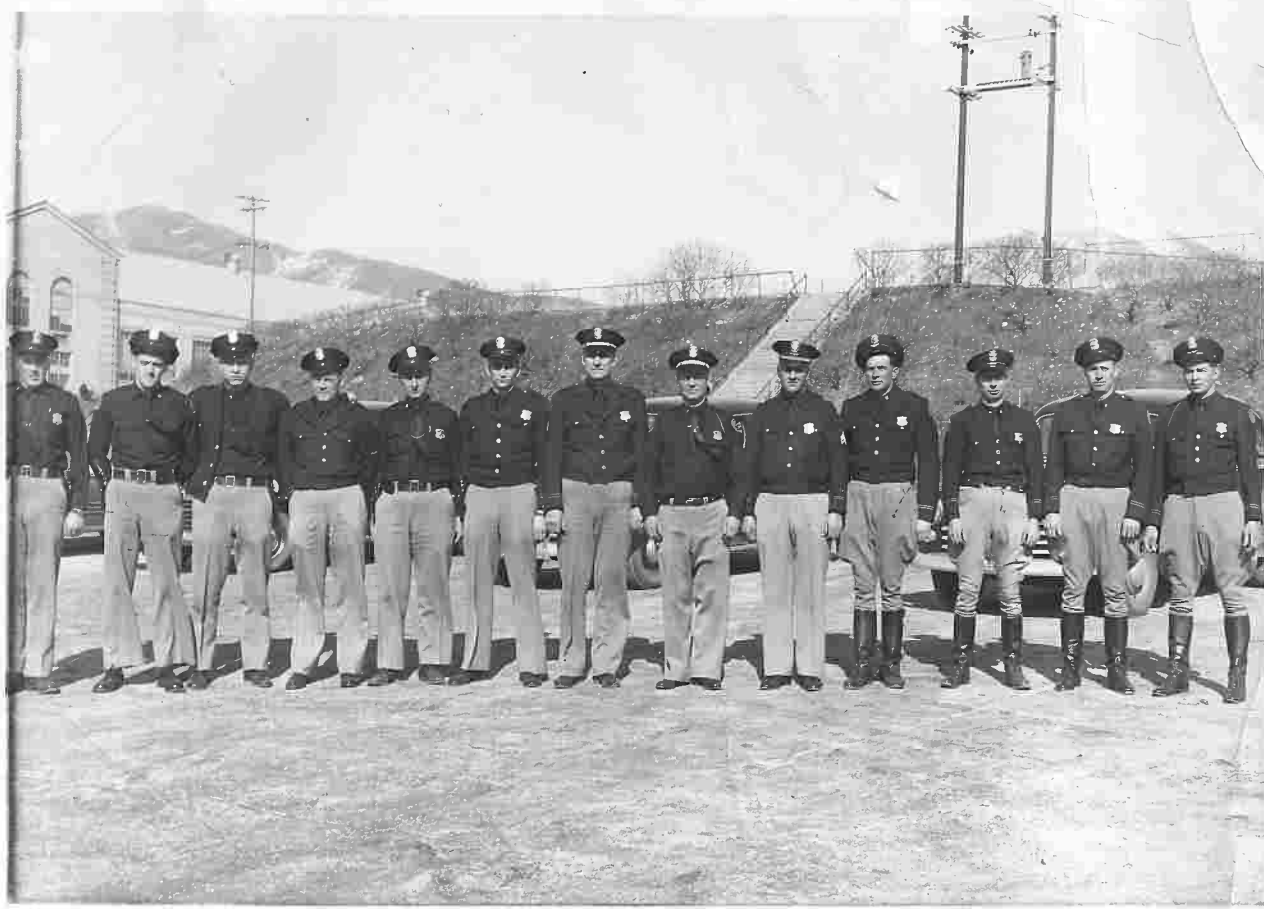
Yellowstone Park, 1952

Left & R

- 1 W. L. Robinson
- 2 M. Harsel
- 3 W. H. Anderson
- 4 Sgt. art. Flowers
- 5 ?
- 6 ?
- 7 Sgt. W. T. Jones
- 8 Capt. H. Fred Lee
- 9 Sgt. Gilbert Hopkins
- 10 Alva Strand
- 11 Sgt. Walt Olson
- 12 Herman S. Jensen
- 13

Jensen about 1950





- 1- W.L. Robinson
- 2- Maxey Howell
- 3- W. Anderson
- 4- Art Flower
- 5- ?
- 6- ?
- 7- Jerry Lee
- 8- Happers
- 9- ?
- 10- ?
- 11- ~~Sam~~ Walt Clay
- 12- ~~Sam~~ Hansen







